

State of Wyoming Corner Record

(In compliance with the *CORNER PERPETUATION AND FILING ACT*, Wyoming Statutes, 1997 Section 33-29-140 et. seq., and the Rules and Regulations of the Board of Professional Engineers and Professional Land Surveyors)

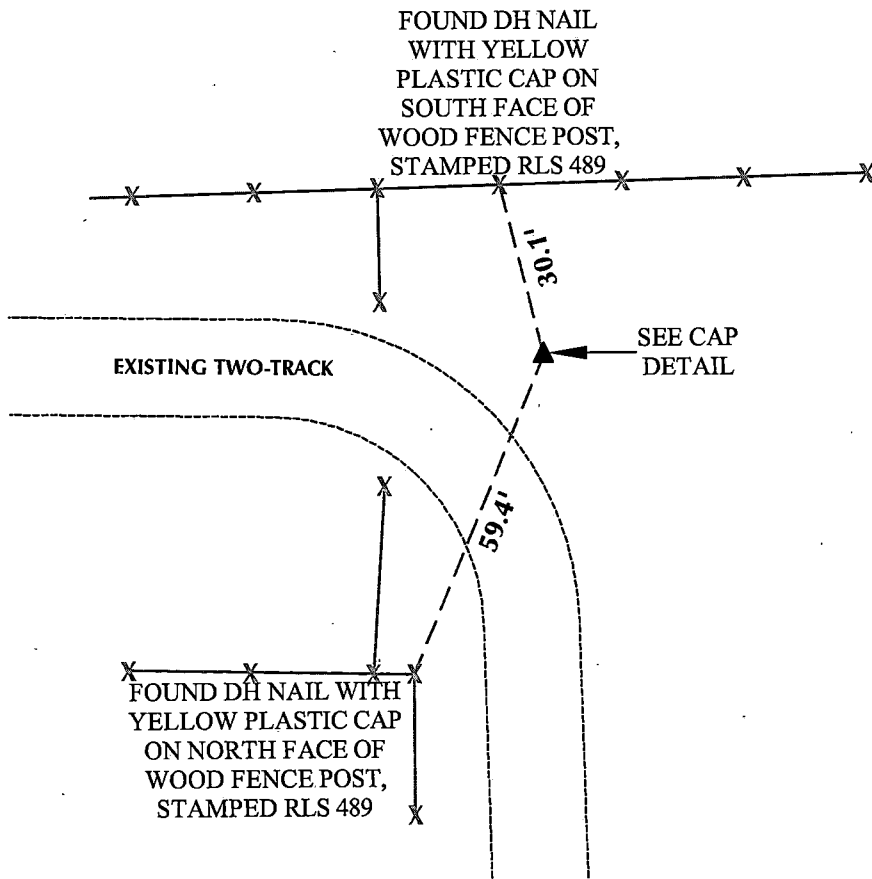
Reverse side of this form may be used if more space is needed.

Record of original survey and citation of source of historical information (if corner is lost or obliterated). Description of corner monumentation evidence found and/or monument and accessories established to perpetuate the location of this corner. Sketch of relative location of monument, accessories, and reference points with course and distance to adjacent corner(s) (if determined in this survey). Method and rationale for reestablishment of lost or obliterated corner.

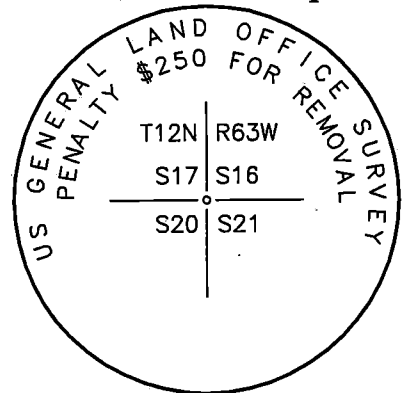
FOUND: 2 1/2" GLO brass cap, marked as shown, on 2" pipe, cap is partially marred; Found dh nail with yellow plastic cap on North face of wood fence post, stamped RLS 489; Found dh nail with yellow plastic cap on South face of wood fence post, stamped RLS 489.

SET: NOTHING.

Monument Location



Monument Inscription



NOTES:

1. ▲ INDICATES FOUND BRASS CAP
2. ● INDICATES FOUND ALUMINUM CAP
3. ◆ INDICATES SET ALUMINUM CAP
4. ■ INDICATES FOUND STONE
5. ALL MEASURED DISTANCES ARE GRID
6. DRAWING NOT TO SCALE



Date of Field Work: 6/14/17

Office Reference: 14-52

Cross Index Plat

	1	2	3	4	5	6	7	8	9	10	11	12	13	14	15	16	17	18	19	20	21	22	23	24	25
A																									
B																									
C		6		5		4		3		2		1													
D																									
E																									
F																									
G																									
H																									
J																									
K																									
L																									
M																									
N																									
O																									
P																									
Q																									
R																									
S																									
T																									
U																									
V																									
W																									
X																									
Y																									
Z																									
	1	2	3	4	5	6	7	8	9	10	11	12	13	14	15	16	17	18	19	20	21	22	23	24	25

Land Surveyor/Firm/Address

609 Consulting, LLC
1095 Saberton Avenue
Sheridan, WY 82801
 Telephone Number: 307-674-0609

This corner record was prepared by me or under my direction and supervision.

Randall K. French

RANDALL K. FRENCH
 PROFESSIONAL LAND SURVEYOR
 WYOMING REGISTRATION NUMBER 12703

Professional Land Surveyor

RANDALL K. FRENCH

12703

Date 3/29/18

WYOMING



RECP #: 728496
 RECORDED 4/3/2018 AT 12:40 PM BK# 2581 PG# 767
 Debra K. Lee, CLERK OF LARAMIE COUNTY, WY PAGE 1 OF 1

Corner Name: Southwest Corner Section 16, T12N, R63W, 6th P.M. County: Laramie Wyoming

Cross-Index No.: N-9

SBRPEPLS/PLSW: March 1994; PLSW January 1998